

MFU



MOTORIZED
HIGH PERFORMANCE
WATER/FOAM THROWER



MADE IN GERMANY

info@hne.ag

www.hne.ag

MFU - MOBILE FOAM UNIT

The fast cavalry...

The **MFU** is a fully autarkic high pressure motor pump for water and foam, the perfect means for fast reacting civil defense forces.

Designed for mounting on light trucks or trailers, it generates focused jets with high range, far reaching clouds of spray or large foam carpets.

Fully automatic engine control and simple push button control make the MFU operable by single persons. It is started up and ready for use within seconds.

With variable jet focus and flow rate, multiple additive reservoirs plus attachable foam thrower, the system is quickly adaptable to a broad variety of situations.



SUITABLE
FOR:



- mounting on various vehicles or trailers
- range and output of big water cannons
- fully operable by single persons
- fully automatic engine control
- fast, efficient and versatile

Jet range up to 35 meters!

50 bar
150 liter
per minute



MADE IN GERMANY

info@hne.ag

www.hne.ag

Compact

Full performance and highest installation flexibility. Adjustable turbo jet gun with foldable fire hose, D-coupling and configurable length. Water supply via C-coupling with filter from external source. Intake of fuel and foam additive via suction lines from external tanks or canisters.



SPECS	MFU 50-150 Compact
max. range with full beam	up to 32 meters
max. range in spray mode	up to 10 meters
throughput	40 – 80 – 130 l/min.
max. pump capacity	150 l per min./50 bar
gasoline engine	2 cyl./4-stroke, 627 ccm
engine performance	23 hp at 3600 rpm
gasoline tank / volume	external / variable
foam tank volume	external / variable
max. suction lift	app. 2.5 m
range of temperature	+5 to 50 °C
weight of module (empty tanks)	app. 180 kg
dimensions (width/depth/height)	82 / 103 / 68 cm

Premium

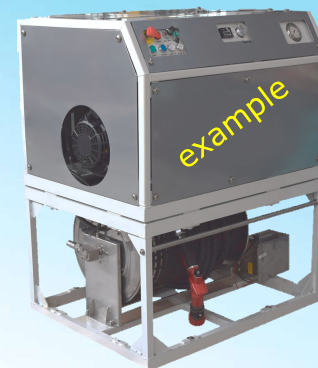
With integrated tanks for fuel and foam additive. Adjustable turbo jet gun with attachable foam thrower and 25 m hose on automatic reel. Additional C-coupling for external water suction.



SPECS	MFU 50-150 Premium
max. range with full beam	up to 32 meters
max. range in spray mode	up to 10 meters
throughput	40 – 80 – 130 l/min.
max. pump capacity	150 l per min./50 bar
gasoline engine	2 cyl./4-stroke, 627 ccm
engine performance	23 hp at 3600 rpm
gasoline tank / volume	integrated / 7.5 liters
foam tank volume	integrated / 25 liters
max. suction lift	app. 2.5 m
range of temperature	+5 to 50 °C
weight of module (empty tanks)	app. 240 kg
dimensions (width/depth/height)	120 / 103 / 68 cm

Decon +

Customized for decontamination with full water/foam throwing capacity. Attachable foam thrower and additional switchable chemical reservoirs for quick change of additives. Available with extended hose capacity on electric or manual driven reel.



SPECS	MFU 50-150 Decon +
max. range with full beam	up to 32 meters
max. range in spray mode	up to 10 meters
throughput	40 – 80 – 130 l/min.
max. pump capacity	150 l per min./50 bar
gasoline engine	2 cyl./4-stroke, 627 ccm
engine performance	23 hp at 3600 rpm
gasoline tank / volume	integrated / 7.5 liters
foam tank(s) volume(s)	external, variable
max. suction lift	app. 2.5 m
range of temperature	+5 to 50 °C
weight of module (empty tanks)	app. 350 kg
dimensions (width/depth/height)	120 / 103 / 107 cm



MADE IN GERMANY

info@hne.ag

www.hne.ag

MULTIPLE WAYS TO YOUR MFU - SYSTEM

Independent

You want to compile your own individual MFU system?
We gladly assist you with information and offer all necessary extensions and attachment parts for your chosen base module.

- inexpensive standard water tanks in different sizes
- electrical or manual reels for variable hose lengths
- integrable or external tanks for chemicals and fuel
- variable connection kits for water intake
- and more; please ask!

Compact package

Space-saving combination of the compact module with a flat shaped water tank of 600 liters volume.



*Images similar

COMPACT



DECON +



PREMIUM

SKID package

MFU module (any version) combined with a 600-liter standard water tank and mounted onto an all-in-one transport frame. Suitable for movement by forklifts, the whole unit is quickly brought into place or loaded on vehicles.



*Images similar

Premium SKID package

Equal to the SKID package above, the MFU of your choice comes in a movable support frame. For accurate installation all variables like dimensions, tank capacity, attachment points or equipment level are tailored to exact customer specifications.



*Examples



MADE IN GERMANY

info@hne.ag

www.hne.ag

Customized models on request

The MFU is adaptable to a wide range of applications. We offer special solutions for customer-specific requirements:

- additional pressure outlet, switch-over by ball valve
- multiple additive reservoirs for change of chemicals
- adaption for aviation, seafaring and military use
- customization for riot control operations
- and more; please ask !

Paintwork:
different
color
schemes
on request



Water tanks:
combinable with a wide
variety of inexpensive
standard models in
different sizes

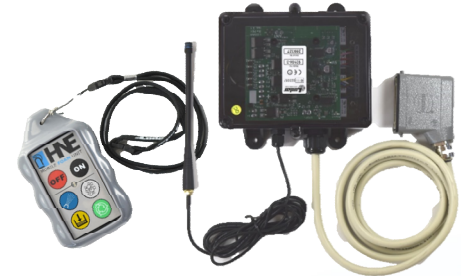
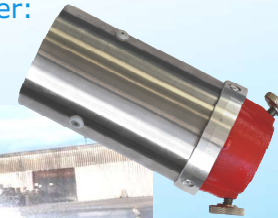
Spray monitor:
roof mounted,
for fire fighting
or riot control



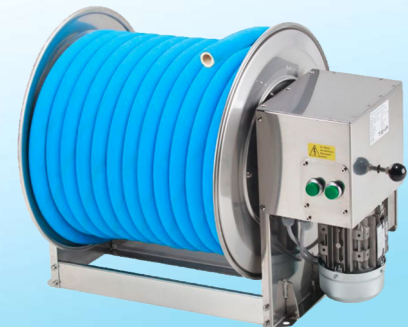
Floating filter:
with C-coupling
for using
water from
external
sources



Attachable foam thrower:
generates large foam
carpets within seconds



Radio remote control:
direct control of the MFU main
functions at the immediate
point of action



Electric reels
for extended hose
lengths up to 100 meters



MADE IN GERMANY

info@hne.ag

www.hne.ag

Criteria	HNE Mobile Foam Unit	Others	HNE Advantages
① working pressure	up to 50 Bar in full continuous operation, less sensitive to wind	7 to 15 bar, more sensitive to wind	extra high jet range, more kinetic energy, more safety distance to fire
② performance (flow rate)	variable in three steps, up to 130 liters per minute	15 to 25 liters/min. counterproductive turbulences, no flow rate control	performance is adaptable to the situation, extended duration at reduced flow rate
③ effective range	compact jet : up to 35 meters spray mode : up to 10 meters foam thrower: 12 - 15 meters	unfocused jet of foam spray, decreasing visibility, 5 to 8 meters	variable jet focus, ranging from compact to spray. pinpoint accuracy at high distance
④ radius of action (hose length)	HNE offers hose lengths from 25 to 100 meters, according to customer requirements	standard hoses, not customized, limited scope of action	Electrically or manually driven reels for all hose lengths
⑤ multiple additives	additional chemical tank, switchable by push-button, pure water for user training	not available, Virtually ineffective when operated without foam additive	Change of additives at the push of a button. Admixture is variable from none to 6 %
⑥ easy to operate	automatic engine control, fully operable by single persons, started up within seconds	complex system, training required	user friendly push-button control allows fast operation under stress conditions



Criteria	HNE Mobile Foam Unit	Others	HNE Advantages
⑦ optional accessories	radio remote control, attachable foam thrower, additional pressure outlet, spray monitor, and more...	? ?	Adaptable to a wide range of applications by optional accessories
⑧ material composition	frame and covers of plastic coated aluminum, all attachment parts corrosion free	? ?	all parts of highest quality, designed to withstand hardest field conditions
⑨ acquisition costs	better price/performance ratio, very cost-effective in the long run	lower price/performance ratio	built for at least 10 years of economic use
⑩ maintenance	low maintenance, user friendly oil change intervals, just visual inspections after use	? ?	easy to check and maintain by own trained personnel
⑪ user training	unlimited training possibilities with water, HNE offers user seminars on site	training without foam inappropriate, otherwise expensive	better efficiency and increased rescue capability of trained users
⑫ spare parts	all spare parts are available for at least 10 years after sale	? ?	easy to maintain and repair by own personnel



1

Why do we need to use it ?

In what situations is it applicable ?



The fully autarkic MFU is predestined for first responding civil defense forces. Mounted on agile vehicles, it is the first to arrive at the place of fire. It reaches places that are difficult to access for heavy fire trucks. It is capable to fight larger fires of class A (solids) and B (fluids) from burning cars up to smaller buildings.

The MFU's main purpose is fire fighting, but it is adaptable to a broad variety of applications: fire fighting, decontamination, spraying of large areas with water or chemicals, riot control. It can be mounted on various vehicles, ranging from agile pickup's to heavy riot control trucks.

2

What are the specifications of this product in comparison to competitors offerings ?



The MFU is quite unique and hardly comparable in its size and performance class. It has jet range and throughput of large water cannons.

Other motor pumps for fire fighting are mostly based on modified high pressure cleaners with considerably less liter capacity, jet range and versatility than the MFU.

The MFU is usually the first to be deployed at the fire site. It is capable to act in the roll of large fire trucks up to their arrival. Only the amount of on-board water limits the fire-fighting capacity.

3

What are the references which can be provided from current clients ?



The MFU is successfully in use by:

South Korean civil defense forces

Myanmar Fire Department

Taipei Fire Department - Taiwan

ASKA group - India, Supplier for sophisticated fire fighting equipment



4

What's the composition of the equipment and the consumable material required for operating how environmentally friendly is it?



The MFU is a hand-made premium product. Frame and covers are of plastic coated aluminum. Engine, pump and gear are supplied by renowned manufacturers. All metal parts are stainless steel, all other components are of highest quality and functionality.

The MFU works with water plus common foam concentrate. All fluor-free and biodegradable extinguishing agents are suitable. Extra high working pressure and a jet gun with variable flow rate are increasing efficiency and reducing collateral damage.

5

What are the prices for the equipment and the consumable materials used in comparison to similar equipment's?



MFU Basic module without accessories: 18.500 €

Prices for competing products ranging from 8.000 € (modified high pressure cleaner), up to more than 100.000 € for large CAFS-Systems.

6

What are the after sales training and maintenance schedules and follow-up/refilling of consumables and support.



HNE's MFU is very easy to use by single persons. All inspection, refilling and maintenance can be carried out by own competent personnel. Spare parts are available for at least 10 years after sale

On request, **HNE** offers maintenance seminars and operating trainings at the customers location.



FIRE TRUCK EXAMPLE

Premium MFU + Volkswagen VW AMAROK



top mounted emergency lights with siren (various colors and sounds)

optional vehicle features:



bumper protection



hardtop with foldable panels

SPECS MFU 50-150	Premium variant
max. range - full beam	up to 32 meters
max. range - spray mode	up to 10 meters
throughput	40 – 80 – 130 l/min.
max. pump capacity	150 l per min./50 bar
gasoline engine	2 cyl. 4-stroke 627 ccm
engine performance	23 hp at 3600 rpm
water tank volume	600 liters
gasoline tank / volume	integrated / 7.5 liters
foam tank volume	integrated / 25 liters
max. suction lift	app. 2.5 m
range of temperature	+5 to 50 °C
weight (empty tanks)	app. 240 kg

SPECS Vehicle	VW Amarok
engine 3.0 V6 TDI	6 cyl. / 2967 ccm
performance kw (hp)	165 (224) at 3750 rpm
fuel	diesel with AdBlue®
transmission	8-gear automatic
drive	4-motion (permanent)
fuel tank	80 liters
max. speed	180 km/h
tire size	255/60 R18
rim size	8 J x 17 aluminum
weight	2095 - 2145
max. weight	3080 kg
length/width/height	5330/2085/1790



MADE IN GERMANY

info@hne.ag

www.hne.ag

HNE FIRE TRUCK EXAMPLE

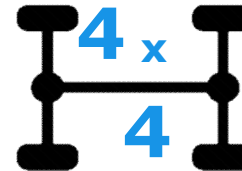
Premium SKID MFU + Mercedes Benz flatbed truck 519



optional vehicle features:



dual tires - rear



4-wheel drive



SPECS MFU 50-150	Premium variant
max. range - full beam	up to 32 meters
max. range - spray mode	up to 10 meters
throughput	40 - 80 - 130 l/min.
max. pump capacity	150 l per min./50 bar
gasoline engine	2 cyl. 4-stroke 627 ccm
engine performance	23 hp at 3600 rpm
water tank volume	2000 liters
gasoline tank / volume	integrated / 7.5 liters
foam tank volume	integrated / 25 liters
max. suction lift	app. 2.5 m
range of temperature	+5 to 50 °C
weight (empty tanks)	app. 240 kg

SPECS Vehicle	MB 519 CDI
engine 4 or 6 cyl.	2143 - 2987 ccm
performance kw (hp)	140 (190) at 3750 rpm
fuel	diesel with AdBlue®
transmission	6-gear manual
drive	rear axle / 4x4 optional
fuel tank	75 liters
max. speed	90 km/h
tire size	205/75 R16 C
rim size	16 "
weight	2415 - 2690
max. weight	5000 kg
length/width/height	6240 / 2130 / 2435 mm



MADE IN GERMANY

info@hne.ag

www.hne.ag

HNE Technologie AG

HIGH PERFORMANCE **FIRE FIGHTING** SYSTEMS

Our range of **live-saving** equipment:

PORTABLE
extinguishers
9 to 13 liters



MOBILE
extinguishers
50 liters



LIGHT SERIES
extinguishers
1.5 to 6 liters



INTEGRATED
fire suppression
systems



HNE Technologie AG
Alter Postweg 96 / D-86159 Augsburg
Tel. +49 821 720 47 70 / Fax +49 821 720 47 99
E-Mail: info@hne.ag / Internet www.hne.ag

THANK YOU FOR YOUR INTEREST

HNE Singapore Pte Ltd
No. 99, Kaki Bukit Av. ,# 02-08 / SG 415984 Singapore
Tel. +65 674 754 80 / Mobile: +65 910 891 77
E-Mail: bhimsen@hne-ag.com.sg/Internet: www.hne.ag